

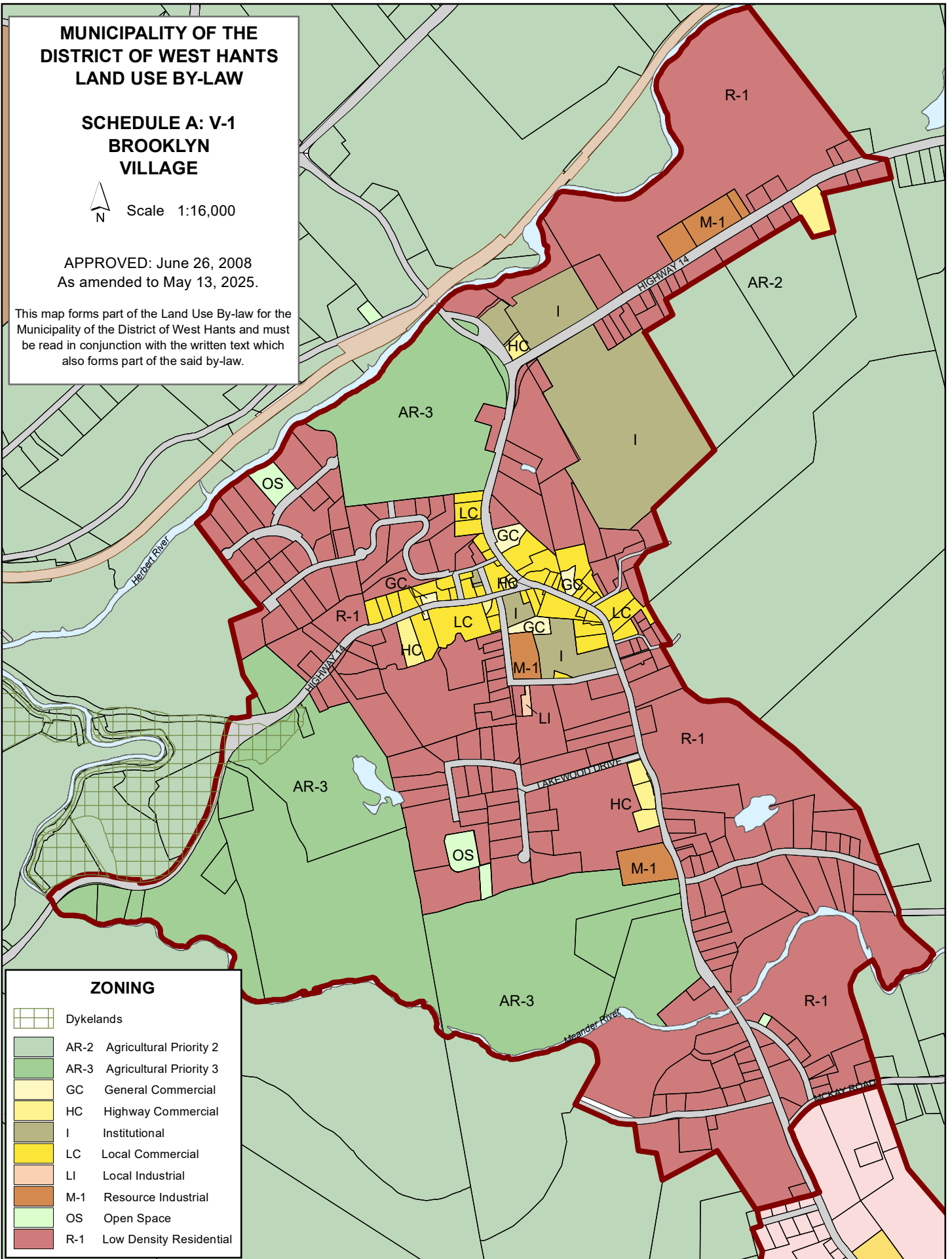
**MUNICIPALITY OF THE  
DISTRICT OF WEST HANTS  
LAND USE BY-LAW**

**SCHEDULE A: V-1  
BROOKLYN  
VILLAGE**

Scale 1:16,000

APPROVED: June 26, 2008  
As amended to May 13, 2025.

This map forms part of the Land Use By-law for the Municipality of the District of West Hants and must be read in conjunction with the written text which also forms part of the said by-law.



**ZONING**

	Dykelands
	AR-2 Agricultural Priority 2
	AR-3 Agricultural Priority 3
	GC General Commercial
	HC Highway Commercial
	I Institutional
	LC Local Commercial
	LI Local Industrial
	M-1 Resource Industrial
	OS Open Space
	R-1 Low Density Residential